



# Liquid Withdrawal Device (LWD)

phasetwo's Liquid Withdrawal Device (LWD) is used to conveniently transfer liquid nitrogen from the D25, D35, and D50 dewars into smaller vessels and receptacles.

Easy to install and use, the LWD locks into the quick assemble/disassemble flange that is attached to the neck of these dewars; the spring plunger attached to the flange locks the device onto the dewar. When installed on a filled dewar, liquid nitrogen evaporation will maintain sufficient pressure to dispense liquid from the LWD.



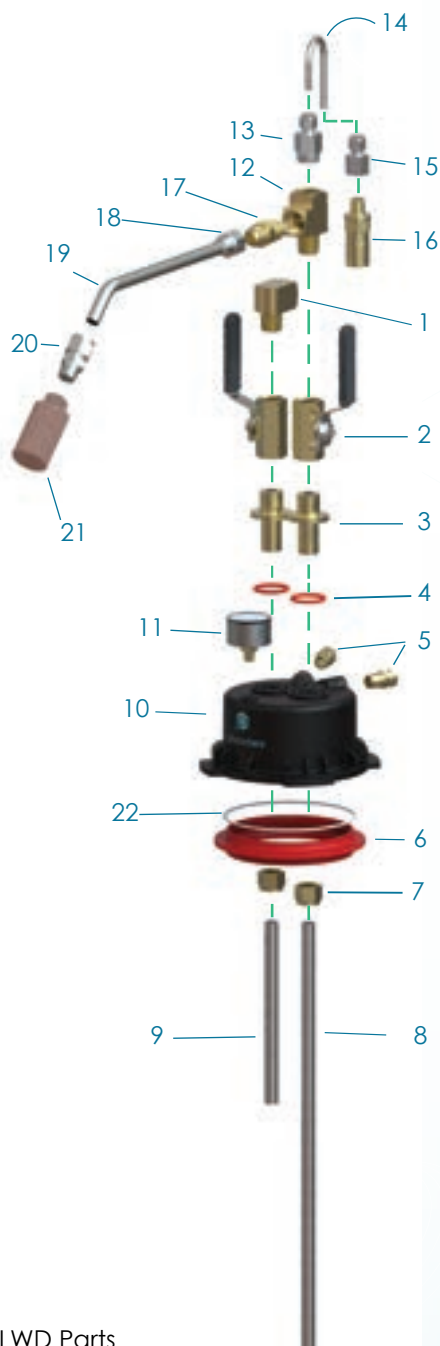
## FEATURES

- **Unique quick connect**
- **Easy Install**
- **Fill dewar without having to remove to maintain pressure for immediate use**
- **Dual pressure relief valves**
- **Flow rates up to 8 liters/min**
- **Large phase separator for controlled flow**



# phasetwo®

## PARTS DIAGRAM



LWD Parts

Item	Description	Part #
1	Elbow, Vent Adapter, 1/2 NPT	P2-2022167
2	Ball Valve (Liquid/Vent), 1/2" FNPT	P2-2017945
3	Valve And Tube Adapter	P2-2017961
4	O-Ring for Ball Valve	P2-2017877
5	Relief Valve 7.25 psig	P2-2020248
6	Sealing Ring, Flange	P2-2017166
7	Nut & Ferrule Kit	P2-2022243
8	Liquid Tube	P2-2022470
9	Vent Tube	P2-2022473
10	Warning Lable	P2-2025231
11	Pressure Gauge 0-15 psig	P2-2019076
12	Tee, Street 1/2"NPT	P2-2014461
13	Adapter, 1/4" Odt X 1/2" NPT	P2-2017966
14	Relief Tube	P2-2014406
15	Adapter, 1/4" Odt X 1/4 NPT	P2-2014465
16	Relief Valve 22 psig (2.4 Bar/241 kPa)	P2-2016152
17	Adapter, Cga 295 X 1/2" NPT	P2T-2017965
18	Tube Fitting, 1/2, 45 Deg, Short	P2-2014472
19	Withdrawal Tube	P2-2014471
20	Adapter, 1/2" OD X 3/8" NPT	P2-2017967
21	Phase Separator	P2-2016118
22	LWD Seal Expander	P2-2023868

Order replacement parts and accessories from your distributor.  
Please include part# and quantity of ordering part#.

For more information contact: +1 770.985.1313  
customerservice@phasetwoCCS.com

**90 day warranty**